

Figura / Figure 1



Figura / Figure 4

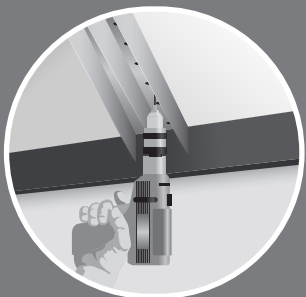


Figura / Figure 2



Figura / Figure 5

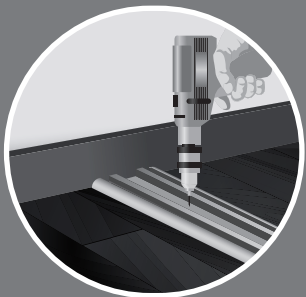


Figura / Figure 3

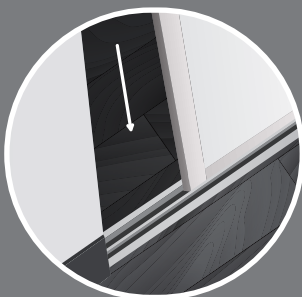


Figura / Figure 6

- Mida la abertura del buque del espacio donde va a instalar las puertas corredizas Alu-door. Corte los rieles superiores e inferiores al ancho del buque con una segueta fina. **(figura 1)**

Measure the opening space where the Alu-door sliding doors will be installed. Cut the top and bottom rails according to the width of the opening with a fine blade. **(figure 1)**

- Instale el riel superior **(figura 2)** en el ancho del buque con un taladro. Install the top rail **(figure 2)** on the width of the space with a drill.

- Instale el riel inferior en el piso **(figura 3)**, puede utilizar cemento de contacto o usar tornillos.

Install the bottom rail on the floor **(figure 3)**, glue or screws can be used.

- Antes de colocar las puertas debe alinear las ruedecillas superiores **(figura 4)**, gírelas suavemente y ajuste el tornillo para dejarlas fijas.

Before placing the doors, the top rollers must be aligned **(figure 4)**, turn them gently and adjust screw to fix them.

- Para instalar las puertas, se introducen las ruedecillas superiores de la puerta en uno de los canales del riel superior **(figura 5)**. Luego se insertan las ruedecillas inferiores y se fija la puerta en el canal del riel inferior **(figura 6)**.

To install the doors, the top rollers must be inserted into one of the top rail channels **(figure 5)**.

The bottom rollers must be inserted and the door is fixed in the bottom rail **(figure 6)**.

## ADQUIERA POR APARTE KIT DE RIELES

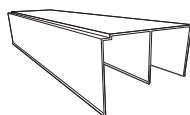
### Kit de rieles para puerta Corrediza Alu-door

- Riel Superior • Riel Inferior

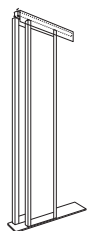
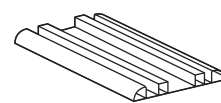
### Parts for the door Alu-door sliding door

- Top rail • Bottom rail

#### ① RIEL SUPERIOR / TOP TRACK



#### ② RIEL INFERIOR / BOTTOM TRACK



### Importante:

- Si es una sola puerta colocarla en el primer canal.
- Si son dos se instala la primera puerta en el canal del fondo y la segunda en el primer canal.
- Si son más de dos puertas, se deben de colocar de manera intercalada en los canales del riel, iniciando siempre con la puerta del canal del fondo.

### Important:

- If it is a single door, install the front channel of the track.
- If there are two doors, install the first door in the back channel of the track and the second door in the front channel.
- If there are more than two doors, they should be placed alternated in the rail of the track always starting with the door in the back channel of the track.